

*Integument its Basic Structure, Functions and its Derivatives
with Comparative Account*

Plate – 27

Epidermal Scales

These scales are derived from epidermal layer. These are found in following organisms -

A) In Reptiles –

- In Reptiles true epidermal scales are found.*
- The scales are found in two distinct patterns-*

1. overlapping pattern as found in Lizards and snakes.

2. Edge to edge pattern as found in turtle and crocodiles

Scales of Lizards and snakes -

- Scales of lizard types are thin flattened, dry, projecting, backwards and partly overlapping the scale behind.*

Plate – 28

- A special sensory structure called apical pits are situated at or near the scales*

- Periodically the scale covering is sloughed off in fragments (in the lizard) or as one piece turned inside-out (in snakes) and a new one is put on in its place
- Scale of crocodile are large. No sloughing takes place, older scales are outworn and gradually replaced.
- Epidermal scales are also found on legs and feet of birds.

In rat and some other rodents' scales are developed over tail.

Plate – 29

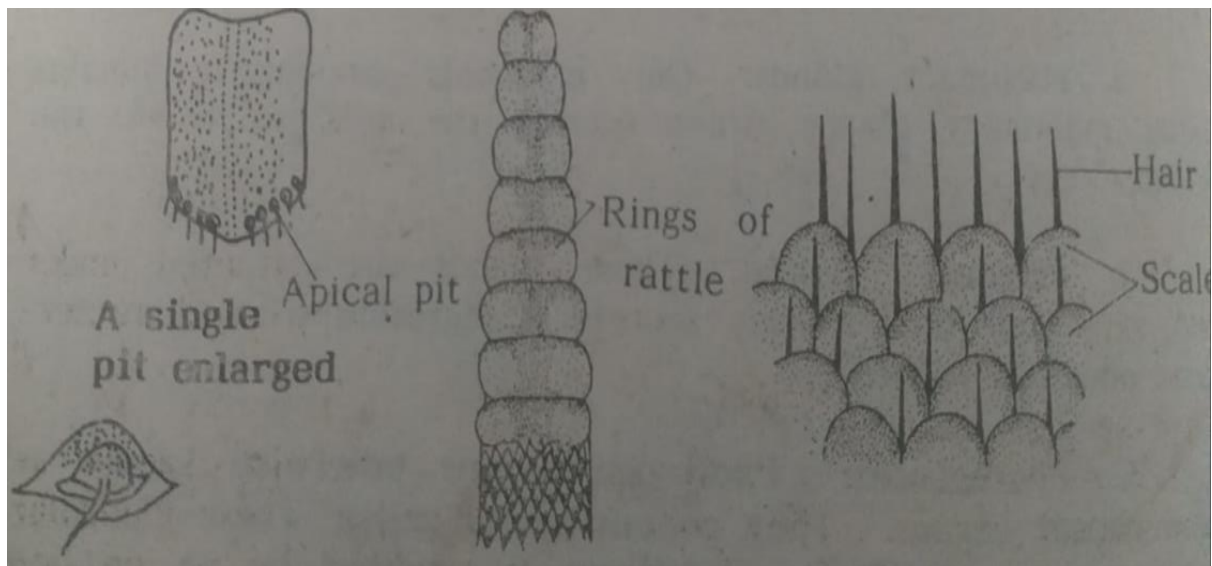


Plate – 30

